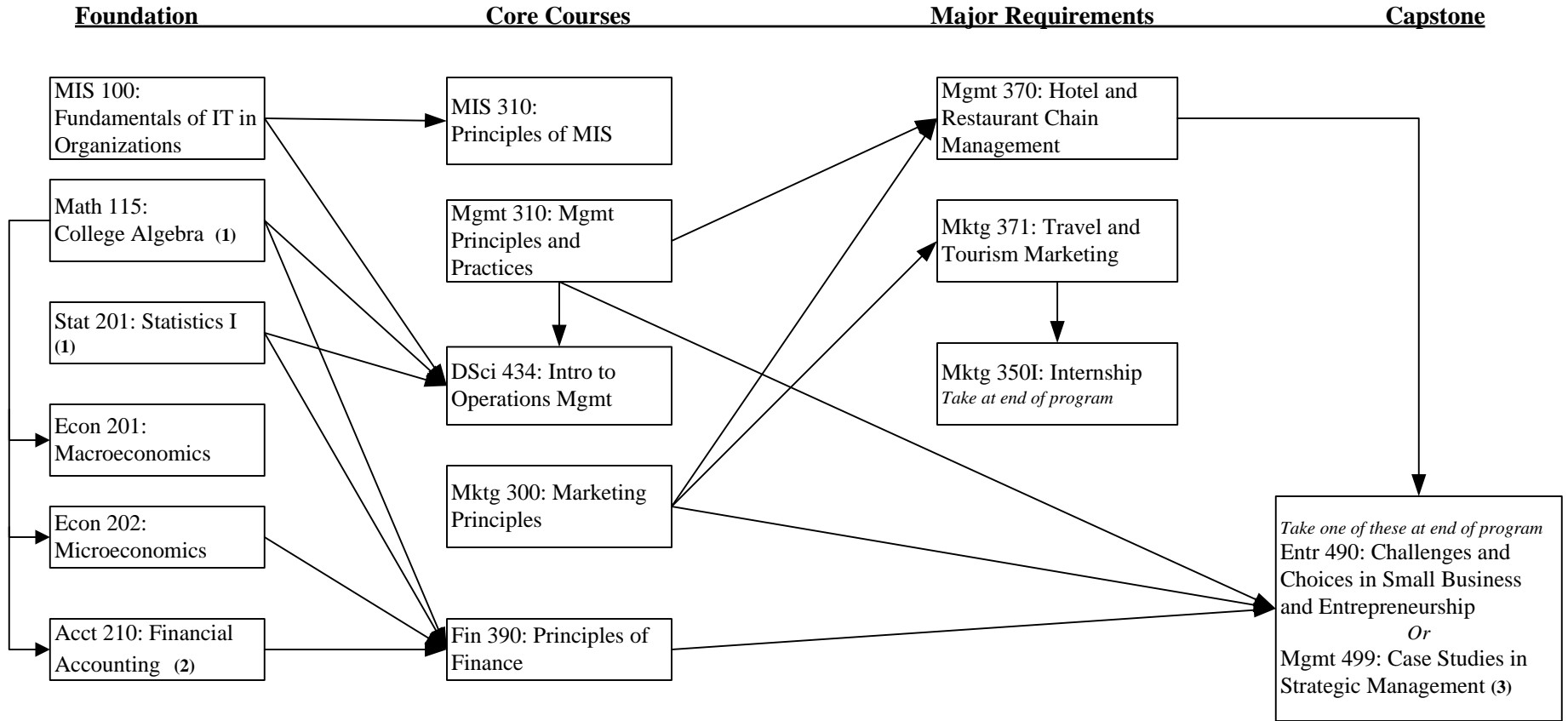


BACHELOR OF APPLIED SCIENCE IN HOSPITALITY MANAGEMENT COURSE SEQUENCE

<https://db.metrostate.edu/webapps/drep/CourseSequence-HospitalityManagement-Major-COM-Campus.pdf>

Fall 2011



Arrows indicate current business prerequisites.

GELS writing requirements and 30 credits must be completed before taking courses 300-level or higher.

(1) May require preparatory math course(s): pre-college math per assessment results

(2) Prerequisite of 40 semester credits of college coursework

(3) Prerequisite of 90 semester credits of college coursework

Prerequisites are strictly enforced. Always check the online catalog and class schedule for prerequisites before registering for any course. Students without appropriate prerequisites may be dropped from the course.