



2016 Impact Report

Making a Difference

Metropolitan State University

FOUNDATION

Engaging ■ Learning ■ Supporting

Welcome from the Foundation board chair

Dear friend,

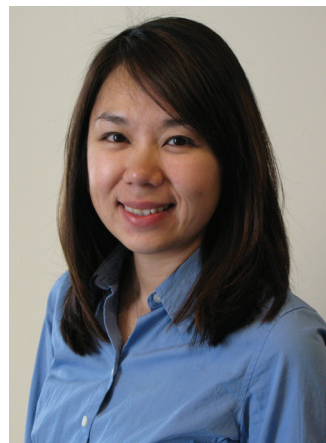
This year we continue to make progress. I'm happy to report that we exceeded our fundraising goal and brought in more than \$1.4 million in gifts to support university programs, scholarships and our endowment. This included the establishment of seven new scholarship endowments and a 36 percent increase in alumni giving. As we create new partnerships to meet the needs of the university and our students we also want to celebrate existing partnerships.

This year marks the 10th anniversary of our partnership with Travelers. They have been our largest and most sustained corporate funding partner with \$2 million in support. Their generosity continues to develop a pipeline of diverse career-ready students to enter the insurance industry. Another partnership we would like to recognize is with Great Lakes Higher Education Guarantee Corporation. Since 2015, they have given approximately \$600,000 to support students with paid internships that provide them with a competitive advantage upon their graduation.

Our fundraising goals and needs are not achieved alone. This could not have happened without the leadership at the Foundation, an internal focus on strengthening our fundraising partnerships with corporations, foundations, individual donors, and recruiting talented and strong leaders to our foundation board. On behalf of our Board of Trustees, thank you for your generous support!

May Shoua Moua

Chair, Metropolitan State University Foundation Board



Message from the university president

It is my great privilege to serve as the President of Metropolitan State University. I am excited about what the coming months and years will bring for our students and communities, because of the many indications that we are entering into an era of unprecedented accomplishment, influence, and reputation. Our array of academic programs is now truly comprehensive, from state-of-the-art programs in our new Science Education Center to the urban-serving programs in our new College of Community Studies and Public Affairs.

With our partners' help, we are changing the face of our Saint Paul campus. The University recently received the largest private gift in our history to support the work of faculty and students in the Science Education Center. Our Student Center now provides an outstanding venue for study, renewal, student organizations, affinity groups, public events, and fitness. Our convenient and secure parking structure serves our students and enhances our welcome to partner organizations and guests.

Our recent growth and growing aspirations, and our upcoming 100th Commencement, both underscore how vital you, our donors and alumni, are to our present and future roles in the prosperity and civic vitality of the greater Twin Cities region. You sacrificially support our students and programs, and you challenge us to be the best university we can be.

I hope you will be inspired by what you learn from this report, and will share your thoughts with me. I always look forward to opportunities to engage with you.

Sincerely,

Virginia "Ginny" Arthur, JD

President, Metropolitan State University

Mission Statement:

Metropolitan State University is a comprehensive urban university committed to meeting the higher education needs of the Twin Cities and greater metropolitan population.

The university will provide accessible, high-quality liberal arts, professional, and graduate education to the citizens and communities of the metropolitan area, with continued emphasis on underserved groups, including adults and communities of color.

Within the context of lifelong learning, the university will build on its national reputation for innovative student-centered programs that enable students from diverse backgrounds achieve their educational goals.

The university is committed to academic excellence and community partnerships through curriculum, teaching, scholarship and services designed to support an urban mission.

Vision Statement:

Metropolitan State University, a member of the Minnesota State Colleges and Universities, will be the premier urban, public, comprehensive system university in the Twin Cities metropolitan area and will provide high-quality, affordable educational programs and services in a student-centered environment.

The faculty, staff and students of Metropolitan State will reflect the area's rich diversity, build a culturally competent and anti-racist learning community and demonstrate an unwavering commitment to civic engagement.

Values:

Excellence

Your education has to be the best. Because you're not just investing money, you're investing time and passion. We make it a priority to provide innovative, high-quality educational experiences from instructors who are experts in their fields. We don't just help you earn a degree. We'll help you prepare for your future.

Engagement

We're plugged into our community and take an active role in its success. We partner with area businesses and organizations to give our students real-world learning experiences. And we offer ourselves as a resource to local groups who work at improving our local community.

Diversity and Inclusion

We celebrate and include all voices in our quest for quality higher education. We value all forms of diversity, no matter one's ethnicity, religious or sexual preferences, income level, learning style or area of academic focus. All are welcomed. All are valued.

Open, Respectful Climate

Students learn better in a safe, open and respectful environment. You'll find one here. We encourage students and faculty to engage in meaningful conversations that embrace differing viewpoints and perspectives. These provide rich experiences and a healthy communication model students can take into their careers.

Integrity

Integrity isn't a one-way street. So as much as we expect our students to conduct themselves in an honest, ethical manner, we also demand the same from ourselves. We're transparent in how we operate. We make sure that all voices are heard. And we're accountable for our actions. You deserve nothing less.

Strategic Intent Statement:

Metropolitan State University provides an inclusive and engaging education to eliminate opportunity gaps and lead the Twin Cities community to a prosperous and equitable future.

A history rich in diversity

Metropolitan State University



In 1972, the first administrative offices of Minnesota Metropolitan State College were in Saint Paul's Capital Center Skyway.



In 1990, the Minneapolis Campus moved to 730 Hennepin Avenue.



In 1992, the university moved to its present Dayton's Bluff site east of downtown Saint Paul.

Metropolitan State University was founded in 1971 as a baccalaureate-granting public university with a mission to address the needs of diverse and other under-served communities. Through the years, that goal has remained. Today, we are one of the premier universities for lifelong learning, with special emphasis on non-traditional, adult and diverse student populations. The university moved to its current St. Paul location in 1992, where it built on already solid relationships with community groups and community-based organizations. The university today serves approximately 11,500 students, offering bachelor's, master's and doctoral programs in a wide variety of subjects. We have 40,195 alumni who have earned 42,737 degrees and are leaders in business, finance, health care and public service. Metropolitan State University is a member of the Minnesota State system.

Metropolitan State University Foundation

The Metropolitan State University Foundation was created in 1972 to generate public awareness, along with governmental and private support for the university. Governed by a board of trustees, it aids the university in its growth as an urban university serving diverse student needs. The Foundation works to increase endowments for scholarships, along with support from corporations and individuals, planned giving, and alumni giving. University programs supported by donors include scholarships, academic program development, applied research, community-based learning, capital improvements, faculty lecture series and other strategic initiatives. Since the university receives 32 percent of its funding from the State of Minnesota, and seeks to keep tuition at affordable levels, it relies on the generosity of its donors to maintain its quality learning environment.

Growing to meet the needs of our students and our community

Three major capital improvement projects at Metropolitan State University are helping to meet the needs of a growing student body:

Science Education Center. In order to provide students with a high-quality education in science and technology, we began construction of a three-story, 64,000-square-foot Science Education Center in August 2014. It offers state-of-the-art classrooms, laboratories, offices, student work spaces and study areas. Doors opened for classes in January 2016, serving up to 3,000 students each week in the critical areas of biology, chemistry, environmental science, anatomy and physiology.

Student Center. A new Student Center serves the growing needs of our adult student population, many of whom take classes in the late afternoon and evening but otherwise don't spend a lot of time on campus. The Student Center provides a place where they can study, relax and participate in group study and social activities. In addition to an informal lounge and study space, the center includes a café and coffee service, a flexible programming space for events, a workout room, and a student organizations suite.

Parking Ramp. Metropolitan State University serves commuting students, which makes adequate parking a critical need. Increased student enrollment and decreased parking space due to new campus buildings created the need for a new parking facility. This long-awaited, five-level parking ramp was completed in October 2015 to accommodate over 760 cars, giving students, faculty and staff a convenient, secure place to park. Space also was created with an additional surface lot to accommodate another 100 cars.



Science Education Center



Student Center



Parking Ramp

Philanthropy: vital to our success

Kopp Investment Advisors chose Metropolitan State.

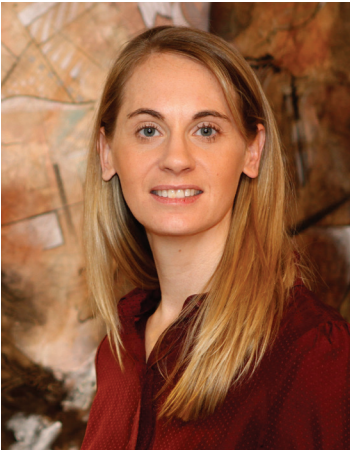
Although Kopp Investment Advisors donates through the Kopp Family Foundation to all of the public two-year schools in the Twin Cities, Metropolitan State University is one of the only four-year schools it funds, according to Lindsey Lang, director of Charitable Giving for the organization. “It was a natural fit,” she said, “because the two-year schools all feed into Metropolitan State. But more than that, we support the university because of the number of programs it offers and its affordability for students. Students who come here know what they want and try to finish as fast as they can with the least amount of student loans. If we can help by providing some scholarship funds to get them out into the working world and build up the community, they can do better and their families can do better. It just trickles down.”

Kopp Family Foundation has provided between \$20,000 and \$25,000 in scholarship funds to Metropolitan State students each year for the last 16 years. Metropolitan State Foundation Trustees select the students and the amounts given to each. In addition, since 2008 Kopp has been providing \$5,000 each year through its Random Acts of Kindness program to supply funds for emergency student needs.

“I meet with all scholarship recipients at least once a year,” Lang said. “I hear success stories all the time about how our scholarships have benefitted them. I’m especially impressed with students who come to Metropolitan State as non-native speakers of English, yet they work hard and get their degree. That’s just fantastic.”



Lee and Barbara Kopp



Lindsey Lang

Why give to Metropolitan State University?

We are serving the educational needs of non-traditional learners and meeting the workplace needs of our community. As the primary public, urban four-year university in the Minneapolis and Saint Paul area, we attract and nurture talent critical to Minnesota business and industry. Our majors are comprised of highly rated professional programs where our students receive in-demand preparation in the sciences, mathematics, and digital technology, combined with the critical thinking, communication, and leadership qualities liberal arts provide.

We provide a unique educational model. With no sports teams or residence dorms, we can offer students an affordable education. We have hundreds of community faculty supporting our full-time residential faculty, giving students current professional perspectives in addition to expert foundational principles and analytical tools.

Your support will enable us to build programs and offer scholarships that change lives, support families and enhance our community.

Please join us in our mission and share our commitment to students and the community.



Your gifts help in two significant ways.

Scholarships

In 2016, \$215,833 was awarded to 144 students, helping them achieve their goals without the overwhelming financial burden of college. Our goal is to provide a scholarship for every student.



Orchale Clark

Meet Orchale Clark, the youngest of five children, who is pursuing a B.S. degree in individualized studies, focusing on financial and marketing management in the hospitality industry. She is a recipient of the Kopp Presidential Scholarship. While going to school, Orchale is working as a cook in the nutrition department of United Hospital. After graduation, she plans to work toward a master's degree in food science, one day opening her own bakery or café while catering on the side. In the meantime, she is already giving back, teaching basic baking and cooking techniques to young girls at Brittany's Place, a safe shelter for victims of sex trafficking. "All that I've learned in culinary school I bring to them, hoping to open up a possible career path for some of them," she said. "My goal is to motivate, encourage and bring a new experience to these young girls."



Sai Thao

Meet Sai Thao, parent of four children, two of whom have special needs, which sparked an interest in early childhood studies. Sai is the recipient of four scholarships: the Kopp Presidential Scholarship, the Forrest W. King Endowed Textbook Scholarship, the Reatha Clark King Endowed Scholarship and the School of Urban Education Non-Endowed Scholarship. "With insight from my personal life experiences and education at Metropolitan State University, I intend to work with the Hmong community," Sai said. "I propose to incorporate early childhood education as a method for increased family bonds while also functioning as a means for informed decision making as families move forward."

Meet Sharonda Miner, whose abusive relationship with a boyfriend led her to pursue a career in criminal justice. The recipient of multiple scholarships, including the Joshua D. Siegel Equal Justice Scholarship, the Law Enforcement and Criminal Justice Scholarship and the Reatha Clark King Scholarship Fund, Sharonda remembers a time when she saw no future for herself. "Transitioning from a victim of domestic violence to an empowered, educated woman altered that," she said. Now, she is pursuing a career as a domestic violence legal advocate, a passion that continues to grow.

Student Support Programs

Donor gifts make it possible to support programs that empower our students.

Great Lakes Internship Program. Thanks to a Career Ready Internship Grant from Great Lakes Higher Education Guaranty Corporation, we plan to offer 335 new paid internships during the 2015–2018 academic years. They are designed for undergraduate students studying science, technology, math, chemistry, management and social entrepreneurship. Internships can be a springboard for students to gain valuable professional experience while receiving compensation to reduce their expenses. They often help students secure good jobs upon graduation and provide employers with a pipeline to fresh talent.

Student Parent Center. The Student Parent Center provides assistance to students who are balancing school with work and family. Opened in 2012, the center provides services such as referrals to community resources for housing, car repairs, food stamps and children's mental health. It also offers family fun events, such as tickets for events both on and off campus. Support groups are also offered through the center.

Food for Thought Food Pantry. Food insecurity can affect academic performance. The Food for Thought Food Pantry has been in existence since 2015 and serves more than 933 students from 23 countries by providing more than 1,195 pounds of groceries per week. The food pantry works closely with the nonprofit Good in the Hood to procure an appropriate amount and variety of food. Other partners include Second Harvest Heartland and the university's Student Senate.

Veterans and Military Student Services Center. The center is available to assist all who have served or are currently serving in any branch of the United States Armed Forces. We serve this important group of students through assistance with admissions and information on academic programs, federal and state educational benefits, VA certification for approved courses, veteran transfer resources, and overall advocacy on behalf of all our veteran and active duty military students.



We make it easy for you to give.

Where to give...

You can designate where your dollars will go.

General Fund. These dollars provide scholarships and academic program support as well as support for special university priorities and initiatives.

Scholarship Funds. Contributions made to privately funded scholarships support students in their academic journey. This is especially critical for students who have exhausted their state and federal funding options and need your help to complete the final stages of their education.

Program Funds. We have many innovative programs that welcome your contributions, including art education, nursing and health sciences, law enforcement and criminal justice, business, management, theater and more.

How to give...

There are many easy ways to make a gift to Metropolitan State University. Choose the one that best fits your individual situation.

Online Giving – www.metrostate.edu/give

Cash, Credit Card, EFT – You may send us a check or donate via credit card through our secure online donation platform. You also may elect to give through Electronic Funds Transfer (EFT). Just provide the requested information on the pledge form, and we'll do the rest.

Stock – Giving appreciated stock helps our students and gives you a tax deduction.

Memorials and Wills – Honor a loved one by leaving a memorial or adding Metropolitan State University to your will or estate plan.

Corporate Matching Gift Programs – Many companies have philanthropic programs through their corporate foundations; some even offer matching gift programs that can double your contribution. Check with your company or organization to see if it has a matching gift program.

Consider an endowment or a planned gift.

We focus on increasing our endowments that provide student scholarships and financial assistance, both of which lead to success for our students and academic program growth for the university.

Currently, we have a total of 46 endowments totaling \$3.2 million. This includes seven new endowed funds established in 2015 and 2016.

First endowment established in College of Individualized Studies

When John Burton lost his 13-year battle with cancer, his wife Sandy knew she wanted to give something back to the university that had supported John for so long. The result was a \$50,000 endowed scholarship fund, which benefits students in our largest college, the College of Individualized Studies.

“This college was special to John,” Sandy said. “It was where he had worked for 24 years from 1987 to his retirement in 2011. It also is a place for many first-generation students, just like John had been.”

John was raised by a single mother who worked long days. There was not much money for living, much less college. Yet, John managed to find a way to obtain a B.A. in sociology and anthropology from Southwest Minnesota State University, where he met Sandy, and an M.S. in college student personnel administration from Michigan State University.

John was dedicated to education. After working at the University of Minnesota and Anoka Ramsey Community College, he joined Metropolitan State as a faculty advisor. Here, he helped to develop a best-practices model for college advisors throughout the United States and co-wrote a training manual. He advised 1,500 students, coordinated the First College Advising Center, counseled the student governing body and won the university’s top student advising award.

“He was a lifelong learner,” Sandy said, “and that is what Metropolitan State is all about. Many students here are struggling to pay for their tuition. I admire their efforts to get an education. I know that is not easy for many, who also have a job and a family to support.”

“Giving back to Metropolitan State through a scholarship fund just feels right,” she added. “It is a good investment. I know John would approve.”

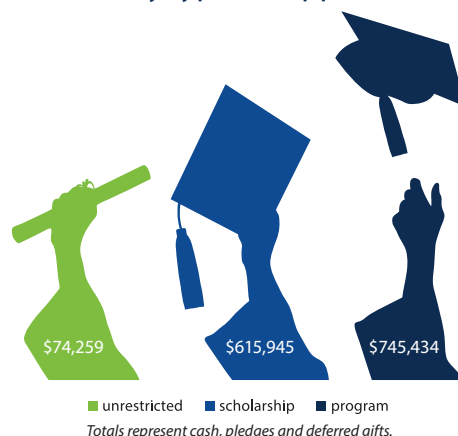
We promise to be good stewards of your investment.

We value your contributions to Metropolitan State University and promise to be good stewards of your investment, sharing with you the many ways in which your dollars are making a difference in the lives of our students.



John Burton

Donor Giving by type of support



Thank you!

The Foundation takes pride in recognizing those who help to preserve the quality education that Metropolitan State University provides. These donors have reached cumulative giving totals of \$100,000, \$30,000 and \$10,000 as of June 30, 2016. They believe in our mission and have made an investment in the university's long-term impact on our community.

Lifetime—\$100,000+

Linda and Andy* Boss
(Harlan Boss Foundation and
Boss Family Foundation)
Joan Hershbell and Gary Johnson
Stephen Keating
Iris and Peter Jay Kiedrowski
Perrin and David* Lilly
(R.C. Lilly Foundation)
Roger and Nancy McCabe
Foundation
Susan and John Morrison
Todd and Martha Nicholson
Fund of the Nicholson Family
Foundation
Craig Vinje and Martha Klager
Vinje

Visionary—\$30,000+

Marilyn T. Bryant
Sandra and John* Burton
Bill and Ann Bushnell
Reatha Clark King and
N. Judge King*
Joseph Commers
Barbara Forster and Larry
Hendrickson
Maria and Ramon Gomez
Beverly Grossman
Sue K. Hammersmith and
Allyn Uniacke
Bruce and Jean Johnson
Todd Lafrenz
William and Pamela Lowe
Jim and Barbara Lukaszewski
C. Francis and Maryllis Oehlke

Lawrence O'Shaughnessy
John Owens and Patricia Strong
Robert B.* and Kathleen Ridder
Mary Rischmiller Holt
(Holt Family Foundation)
Robert Sabes (Moe and Esther
Sabes Family Foundation)
Susan and Robert Shumer
Arthur and Ronnie Siegel

Legacy—\$10,000+

Jan and Paul Anderson
Wilson and Jo Anna Bradshaw
Cathleen Brannen
Dorene Bruns
William Buending
Janice Cotton
Alan Dubinsky
Ann Sheldon Duff*
Joseph C. Ellis II
Jane and Douglas Gorence
Robyn Hansen and John Clarey
Anne and Peter Heegaard
Bob Ingram
Leslie A. Johnson
Terry Kelly
Anne and John Knapp
Diana Lewis
Marilyn Loen
Patricia and Gary Mahre
Ed Malecki
Virginia J. McCain
Michael McCarty
Nancy McKillips
Chet and Miriam Meyers
John and Sheila Mohr

Marilyn Molen
Becky Omdahl
Molly O'Shaughnessy
Nadya Parker
Dale Perry
Adela Peskorz
Dennis G. Richards
Paul Ridgeway
Susan T. Rydell
Andrea Scarpa and
Lillian Hall Scarpa
Dennis Schapiro
Irene Schapiro
Gary Seiler
Jerry and Mary* Showalter
Murtuza and Seema Siddiqui
David Sparby
Mary K. Stern
Arleene Sweet
Joanne Tromiczak-Neid
John Turner*
Albert* and Deera* Tychman
Sim Varner*
John Vegas
Susan and Bruce* Vento
Jeanne Voigt/MindWare
G. George Wallin
Kathy and Steve Wellington
Lawrence Young*
Richard Zehring

Planned Gift Donors

We wish to acknowledge the generosity and foresight of the following donors who have included Metropolitan State University in their estate plans:

Linda and Andy* Boss
Dorene Bruns
Bill and Ann Bushnell
Joseph C. Ellis II
Robyn Hansen and John Clarey
Joan Hershbell and Gary Johnson
Terry Kelly
Iris and Peter Jay Kiedrowski
Jim and Barbara Lukaszewski
Patricia and Gary Mahre
Nancy McKillips
Chet and Miriam Meyers
Marilyn Molen
John Owens and Patricia Strong
Susan and Robert Shumer
Mary K. Stern
Arleene Sweet
Craig Vinje and
Martha Klager Vinje
Richard Zehring

Thank you to the following donors who generously supported programs, scholarships and Foundation operations, as of June 30, 2016.

New Main Society—\$1,000+

Maureen Acosta and John Milton
Virginia Arthur
Mary S. Bowman
Ellis F. Bullock, Jr.
Teri and Emanuel Calderon
Douglas and Ann Dumas
Amy Dunn
Brian K. Goodroad
Ruby M. Hunt
James and Katherine Johnson
Douglas Knowlton
Bruce E. Lindberg
Katherine Lui
Kirk T. Metzger
E. Craig Morris
Thomas A. Nelson
Anne E. Sonnee

Sharron L. Steinfeldt
Mary Jane Thompson
Steve Wallin

Honor Roll—\$100+

Norma E. Anderson
Roberta A. Anderson
David A. Andrie
Sheila and Gregory Andrie
Rene Antrop-Gonzalez
Irving L. Aslakson
John and Beth Asmussen
Beverly J. Bakken
Michael T. Baldwin
Michael L. Banks
Gary and Katherine Baribeau
Greg G. Beckstrom
Allen S. Bellas
Irene E. Bender
Charles R. Bengtson
Gary M. Berkovitz
Lisa M. Bernard
Vicki Berner
Sandra L. Best
Tyson J. Best
Donald F. Bibeau
Bruce Biser
Diane J. Blaser
Christine M. Boese
Bruce A. Bong
Patricia S. Borchert
Karl and Sharon Bozicevich
Michael A. Branch
Betty Brandt Passick
Paola C. Brigneti
Juliann E. Brovold
Sharon J. Buettner
Maureen A. Buhl
Phyllis M. Burdette
Robert W. Carlson, Jr.
James and Mary Charmoli
Maureen A. Buhl
Phyllis M. Burdette
Robert W. Carlson, Jr.
James and Mary Charmoli
Mary Ellen Chinander
Earline Coleman
Jean and Lawrence Cook
Thomas H. Cook
Patrick J. Copeland
Jeffery and Amanda Cotton

Arnold F. Court
Margaret O. Crabbe
Steven and Maureen Creason
Gary L. Cunningham
Judi and John Dahlseng
David Decker
Kejela T. Deressa
Sharon E. Drews
Harvey L. Dundas
Mary P. Dunlap
Deborah A. Eckberg
Peter J. Eichten
Andrew Ervin
Ellen G. Etzkin
Frances and Robert Eue
Suzanne C. Fitzgerald
Patrick E. Flahaven
Readus W. Fletcher
Russell Fraenkel
Joseph Fritz
L Suzanne Fust
Robert F. Garland
Wayne R. Gilleland
Julia E. Gillett
Monica K. Gould
Frank J. Grass
Judith A. Graziano
Robert Gremore
Elizabeth A. Grimes
Lisa A. Grimm
Diane L. Grund
Angelo J. Gust
Carolyn A. Hamlin
Vesna Hampel-Kozar
Ryan Q. Hankins
Donald T. Hansen
Kristine A. Hansen and
John Lick
Mirja P. Hanson
Rachel A. Hanson
Martha E. Hardy
John M. Harrington
Richard N. Harrison
Pamela M. Hartley
Charles P. Hartmann
Laura J. Hawkins
Cindy R. Hedgers
Signe A. Heffern
Victor F. Hernandez
Stewart G. Hine

Keith and Judith Hoffmann
 Margaret M. Holahan
 Elsbeth M. Howe
 Kim Hubertus
 Kieran M. Hughes
 James F. Hulburt
 Paul R. Hultman
 David W. Jacobson
 Jay A. Jaffee
 Linda D. Janni
 Andrea D. Jenkins
 Alvin and Margaret Johnson
 Roxanne D. Johnson
 Wayne C. A. Johnson
 Marlea Judd
 Robert and Margaret Junkin
 Nancy L. Kachel
 Steven Karel
 Kathryn E. Kelley
 Gretchen J. Kelly
 Patrick T. Kelly
 Thomas and Mary Kelly
 Gary J. Ketch
 Thomas and Elizabeth Kiekhafer
 Joseph R. Kingman, III
 John W. Kirchner
 Mitchel M. Kitavi
 Les R. Klos, Jr.
 June M. Knutson
 John H. Kohring
 Duane M. Kramer
 Michelle L. Krone
 Mark Kronholm
 Jane M. Krueger
 Kathleen Kueppers and William Perkins
 E. Ted Kuether
 Charles C. Kuhl
 Paul and Kathleen Kurtis
 Janice Kwallek
 Ross M. Kylo
 Marielle M. Lachambre
 Gregory J. Lais
 Michael Langley
 David G. Larson
 David W. Larson
 Mark C. Larson
 Joyce T. LeClaire
 Matthew P. Leonard

Alan R. Lessik
 Michael D. Limanen
 Lee T. Litman
 Chia-Yin Lo
 Stella Lundquist
 Linda J. Lutz
 Thomas R. Maida
 Marcia J. Marshall
 William V. Martin
 Lawrence Mascotti
 Julie A. Maxson
 Linda M. McCann
 Dick and Regina McCarthy
 Christine McGing
 John D. McGowan
 Steve and Anita McKeown
 Lisa Ann McMahon
 Gregory R. Mellas
 Chet and Miriam Meyers
 Lisa M. Middag
 Guy L. Milliren
 Melva D. Moline
 May Shoua Moua
 Thomas E. Muchlinski
 Joseph P. Neuberger
 Debra L. Newman
 Eve Nichols
 Kathleen A. Nordstrom
 Catherine J. O'Brien
 Peris A. Oladipo
 Carol R. Olausen
 Chris N. Olsen
 Audrey G. Olson
 Karen K. Olson
 Rick A. Pankow
 John F. Parkos
 Michael R. Parrish
 Colin B. Partridge
 Michael G. Peterson
 Dale M. Pfrimmer
 Christopher and Angela Pinkerton
 Carl Polding
 Noriko Ramberg
 Marquitta Ransom
 Vadhindran K. Rao
 Larry G. Rapoport
 Erica and Kraig Rasmussen
 Mona L. Rath
 Yvonne RB-Banks
 Dennis J. Recknor

Debra M. Ricci
 Sandra J. Ricci
 Anthony Roan
 David R. Ross
 Judy Russell-Martin
 Dorothy A. Sandahl
 Vicky L. Sarner
 Christine Schafer
 Loretta Schuft
 Lynne S. Schulz
 Daniel T. Segersin
 Michael J. Seitz
 Susan W. Sexton
 Thomas H. Sieg
 Jerie S. Smith
 Barbara L. Snow
 Linda and Glen Stenlund
 Sue B. Stingley
 Steven Strachan
 William H. Tandle, Jr.
 Robert R. Thelen
 David J. Therkelsen
 Norma J. Tillges
 Mary C. Tingerthal
 Marjorie A. Todd
 Stephen A. Tornio
 Joseph D. Tromiczak
 Michelle Van Santen
 Bruce T. Van Siclen
 Debra Vos
 Trung Dinh and Van Vu
 Ralph J. Wall
 Holly L. Ward
 Elizabeth V. Weir
 Kay S. Welsch
 Helen C. Welter
 Thomas and Nancy Weninger
 Diane Whitson
 Jane C. Widmer
 Denise E. Williams
 Kevin R. Wilson
 Joan Wittman
 Gayle Yamry
 William and Romi Zajicek
 Jeffrey A. Zimmerman

Supporter-\$50+

Forrest B. Adams
Sohail Ahmed
Anita D. Alexander
Joseph F. Alfano
Georgia L. Anderson
Patricia J. Anderson
Leonard Andrie
Lori M. Anthonsen
Bradford C. Armitage
Marilyn E. Baldwin
Judith N. Bearman
Gary R. Becklund
Ronald E. Beckstrom
Michael S. Bednarz
Barbara Beltrand
Kimberly D. Bieringer
Dale W. Blount
Mark J. Bonitz
William H. Bonkowski
A. J. Fred Boulay
Lu A. Brackett
John R. Bradford
Lorraine R. Brasket
Mark J. Bregmann
Dianne M. Brooke
Kathleen M. Bystrom
Ingeborg K. Chapin
Julie H. Chapman
J. M. Christianson
Mary A. Clark
Jeremiah J. Conlon
Jonathan E. Cook
Patricia J. Crane
Melissa A. Cuddihy
Vitali Datsenko
Terence J. Davern
Joan K. Detzler
Cynthia J. DeVore
Carol Dittberner
Shirley J. Duncanson
Janet M. Ellwanger
Joan M. Elton
R. Evelyn Engle
Ronald J. Falk
Christopher J. Farley
Lucinda K. Findorff
Jose Juan Flemate Ronces
Margo Fox
Tammy K. Fredrickson

Patricia L. Freeman
Colleen J. Fritsch
Charles and Lorraine Gabbert
Mark A. E. Gallagher
Mary H. Gates
Zenebe A. Gebremedhn
David J. Gerdes
Carole J. Gerst
Robert P. Glass
Manley E. Glaubitz
Jody M. Glynn
Sarah Gonnella
Amos Kelvin Gray
Shannon S. Griffith
Gregory J. Gustafson
Theresa A. Hable
Marcia Hagen
L. Eileen Hamre
John and Terri Hawthorne
Kathleen M. Hebrink
Wayne R. Heck
Marcus D. Hedlund
Marnie L. Helmerick
Jennyfer Hildre
Ron G. Hippen
Ryan D. Holt
Patricia M. Hoolihan
Emily Hummel
Gary L. Istad
Misha Jameson
Beverly G. Johnson
David R. Johnson
Janet Johnson
Karen E. Johnson
Thomas J. Jones
James D. Jorgenson
Suhanthi Kamesh
Lennie and Jill Kaufman
Anthony F. Keenan
Jane M. Kemp
Juliana B. Kimball
Sheila B. Kloeppner
Sharon P. Knuth
John and Richelle Koller
Lindsay R. Koolmo
David S. Kough
Mathew A. Kunz
Wendy S. Lane
Kris Lang-Shasky
Rhona G. Leibel

Patrick G. Lipinski
Kevin G. Locke
Michael J. Ludvigsen
Wanda J. Lukaszewski
William P. Lundholm
Teresa A. Lynch
Russell Madren
Roberta C. Malles
John B. Margot
Mishelle J. Marsolais
Lawrence and Lois Mazanec
Matthew E. McCabe
Jeanette M. McCarthy
Jean A. McDonald
JoAnne S. McKim
Carla R. McVey
Elizabeth A. McWhite
Brenda A. Merrill
Kenneth E. Meyer
Margaret E. Meyer
Cheryl A. Meyers
Ruth Ann Michnay
C. Dennis Miller
John M. Miller
Susan A. Misterek
Kimberly A. Mokosso
Paul F. Moore
Nforsi E. Moutchia
Jo Anne Murphy
Lilly L. Murr
Benjamin E. Nelson
Daniel A. Nelson
Lillian Neufeld
Janice R. Noerenberg
Jane E. Nordin
Lois V. Nyman
Dennis R. Oberg
Peter J. O'Grady
David J. O'Hara
Sally Rosalia and Vernon Olsen
Julie A. Olson
Lorena A. Palm
Jill Palmquist Larsen
Sandra L. Pappas
Michael P. Pappenfus
Pragnesh S. Patel
Cheryl Paullin
Gladys E. Pecore
Jerry L. Pendergraft
Bruce R. Peterson

Steven W. Peterson
 Deborah D. Pirkle
 James and Karen Porath
 Delinda M. Price
 Dolores C. Rairamo
 Dominic D. Ramacier
 Marilyn J. Ringold
 Mel G. Robinson
 Meredith L. Robinson
 Marion D. D. Ryshavy
 Robert J. Savard
 Patricia M. Scharf
 Robert I. Schatz
 Kimberly K. Scheider
 John W. Schenck
 Bergliot M. Schevenius
 Marilyn A. Schroeder
 Kathleen and Alan Schultz
 Frank J. Schweigert
 Linda Selbitschka
 Yvonne D. Shirk
 John D. Slama
 Kathy L. Soucy
 Iris C. Staubus
 Diana K. Tchida
 Nancy G. Valento
 Garret D. Vander Vorst
 Jon D. VanDiver
 Mai L. Vang
 Donna R. Vig
 Bryan H. Volk
 Alice M. Vollmar
 Mary Von De Linde
 Nicholas J. Wasylik
 Lynda J. Waterman
 Carolyn M. Weber
 Thom Weddle
 Ronald C. Weeks
 James P. White
 Colleen A. Wilske
 Phyllis L. Wilson
 Thomas M. Wilson
 David Wood
 Neda R. Wood
 Irene A. Wright
 Curtis G. Yaeger
 Hiroko Yff
 Keith W. Ylinen
 Kathleen A. Zieman

Corporate and Foundation Donors

\$100,000+

Great Lakes Higher Education
 Guaranty Corporation
 Travelers

\$50,000+

The Saint Paul Foundation

\$10,000+

Elmer L. and Eleanor J. Andersen
 Foundation
 F. R. Bigelow Foundation
 Kopp Family Foundation
 Mains'l Services, Inc.
 Nexus Community Partners
 The Bauman Foundation

\$1,000+

Marco, Inc.
 Minnesota Community
 Foundation
 Sit Investment Associates, Inc.
 The K Foundation
 WCA Foundation

\$500+

Follett Higher Education Group
 Low Voltage Contractors
 M. A. Mortenson Company
 The Minneapolis Foundation

\$100+

Adolfson and Peterson
 Construction
 Brookside Resort
 Christ the King Lutheran Church
 of Bloomington Foundation
 Eagle Valley Financials
 Fidelity Charitable Gift Fund
 G & R Plus Corporation
 G2 South, LLC
 J & R Marketing
 Kathy Kueppers, Inc.
 Minnesota Association of
 Professional Employees
 Natureview Landscaping Inc.
 Old McDonald's Farm
 Pat McGovern's, Inc.
 Pine Lake Communications and
 Electronics
 The Church of Saint Joseph
 Tim Fangel's Painting &
 Decorating
 Wilkerson Guthmann

\$50+

Martin Calibration Inc.
 Midnight Motorcycle
 Minnesota Humanities Center
 Northwest Home Health Care LLC
 Southview Design, Inc.

Memorial Gifts

In memory of Donna Blacker

Nancy Bagshaw-Reasoner
Phillip A. Bell
Scott Bieber
Anabel Blacker
Trinh A. Carpenter
Jeanne O. Cornish
Mary Anne Cummings
Diane Evans
Linda A. Foster
Coralie S. Ginsburg
Joseph W. Gordon
Lynn Iverson-Eyestone
Thomas B. Jones
Karen P. Kanzia
Baorong Li
Ed Malecki
Barbara G. Minor
Ryan D. Moscoe
MSUAASF
Eve Nichols
Suzanne R. Nielsen
Carolyn Roney
Lynne S. Schulz
Theodore D. Segal
Sumiko O. Sitcawich
David M. Smith
Margaret M. Sullivan
Amy Taxman
Anne H. Warner
Kathy and Steve Wellington
Susan L. Williams

In memory of John Burton

Daniel Abebe
Leslie Adams
Cheryl A. Anderson
Barbara J. Audiss
Marlene J. Black
Teresa A. Black
Sandra Burton
Robyn Churchill
Vincent M. DiCerbo
Rosemary J. Dummer
Leah S. Harvey
Terri and John Hawthorne
Kenneth C. Hess
Kathleen J. Knapp
Carol Lacey
Metropolitan State University
Inter Faculty Organization
Anne C. Miranowski
John and Susana Miranowski
John and Sheila Mohr
Susan Amos Palmer
Signe M. Pretzel
Sue Rodli Astin
Gary R. Seiler
Lorri L. Skwira
Carlotta A. Stomberg
Margaret H. Towle
Nancy C. Traen
Debra Vos
Kathy and Steve Wellington

In memory of Janet Keleher

Joänne Tromiczak-Neid

In memory of Rose Krancevic

Marjorie B. Savage

In memory of Paul Daniel McHale

Joänne Tromiczak-Neid

In memory of Oren Steinfeldt

The Steinfeldt Family Fund
of Minnesota Community
Foundation

In memory of Marie Tromiczak

Kathleen A. Moriarty
Joänne Tromiczak-Neid

In memory of Harriet Wilson

Metropolitan State University Inter
Faculty Organization

The recognition extended to our donors listed is one small way to say thank you. Every effort has been made to ensure that the list is accurate. If your name has been omitted, misspelled or misplaced, we apologize. Please contact us at foundation@metrostate.edu so our records can be corrected and gifts properly acknowledged.

On behalf of Metropolitan State University faculty, staff and students, thank you to all of our generous donors, whether you've contributed your time, your talent or your treasures. We value your dedication to our university and thank you for being a part of our commitment to our students and our community.

Metropolitan State University Foundation Board of Trustees



Zeeshan Baig
Manager, Financial Planning
and Analysis
G & K Services



Christine Boese
Vice President of Patient Care
Services/Chief Nursing
Officer
Regions Hospital



Ellis F. Bullock, Jr.
Executive Director (Retired)
Grotto Foundation



Teri Calderon
Executive Vice President,
Human Relations
Field Nation



Ochen Kaylan
Attorney
(Alumni Board Representative)



Sophia Khan
Diversity and Inclusion
Strategic Leader
Wells Fargo



Gregory Lais
Founder and Executive Director
Wilderness Inquiry



Michael Langley
CEO
Greater MSP



Mike Parrish
Vice President, Primary Care
and Enterprise Operations
(Retired)
North Memorial Health Care



Lisa Schoening
Vice President Human
Resources/HRBP Leader
St. Jude Medical, Inc.



Richard Smith
Regional President, Upper
Midwest and Northwest
Travelers



John Vegas
Vice President, Human
Resources
G & K Services



Gary Cunningham
President and CEO
Metropolitan Economic
Development Association
(MEDA)



Kareen Ecklund
Attorney
Felhaber, Larson, Fenlon &
Vogt, P.A.



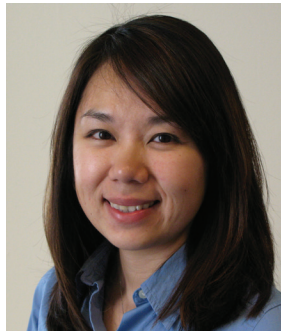
Joseph Ellis
Senior Vice President
Wells Fargo



Nate Hartle
Senior Director of Regulatory
Affairs
McKesson Corporation



Chia-Yin Lo
Staff Dentist
VA Medical Center



May Shoua Moua
Evaluation and Planning
Analyst
Ramsey County Corrections



Joseph Neuberger
Director, Operations Branch,
MN Dept. of Public Safety
State of Minnesota, Homeland
Security and Emergency
Management



Cathy O'Brien
Consultant
CliftonLarsonAllen LLP



Samuel Ortiz Verdeja
President
Semillas & Associates, LLC



Craig Vinje
CEO
Orange Tree Screening



Richard Zehring
President/CEO
MSP Commercial Companies

Metropolitan State University Foundation
700 East Seventh Street ■ Saint Paul, MN 55106-5000 ■ Phone: 651-793-1802
foundation@metrostate.edu

Metropolitan State University, a member of Minnesota State

This information is available in alternative formats upon request by contacting the Center for Accessibility Resources, accessibility.resources@metrostate.edu or 651-793-1549. An equal opportunity educator and employer.