
FOUNDATION /// **2022-2023 Impact Report**

Thank You!

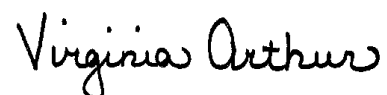
Dear Friends,

We are pleased to share this report on the impact of your generosity at Metro State. During the 2022–2023 fiscal year, the Metro State University Foundation, in partnership with our donors, recognized academic success, addressed students' financial needs, and supported educational and student services that enhance the Metro State experience. Your support, alongside that of our other valued donors, has made a remarkable difference in the lives of our students and the community.

Metro State University is an ever-changing, ever-growing academic home where students can apply their strengths and gifts to pursue a life-changing degree. It is our privilege to play a part in their success. We are proud of our role in their transformation. Your gifts have made a difference in the lives of students.

At both the university and the foundation, we believe that the power of change belongs to all of us. It is a heady ideal, and from personal change to societal transformation, we seek ways to put your generosity to work to create a better, more equitable, and just society. Your generosity has been transformational.

The stories within this report exemplify how the foundation and the university collaborate to open doors, pave pathways of opportunity, and empower students to create a brighter future. We hope you



Virginia “Ginny” Arthur, JD
President



Joseph Ellis II
Board Chair, Metro State University Foundation



share in the immense pride we feel, knowing that together, we are shaping a better tomorrow.

Once again, thank you for your incredible support. Your dedication makes a significant impact, and we look forward to continuing this journey together.

Cover photo: Santiago Villanueva-Montoya, recipient of the Sit Academic Scholarship, and Arianna Villanueva-Montoya, recipient of the Kopp Family Foundation Scholarship
Photo credit: Andy Berndt

Metro State University Foundation Mission Statement and Impact

Foundation Mission Statement

Metro State University Foundation works to secure a vibrant future for our university and the students who come through our doors. Generating public awareness, along with private support, the foundation seeks to increase endowments and other support from alumni, corporations, foundations, and friends to support scholarships and other forms of support for Metro State University and their students.

Who We Serve

Metro State Foundation, based in Saint Paul, Minnesota, serves the university and enrolled students across four locations in Brooklyn Park, Minneapolis, and Saint Paul, Minnesota.

Impact

All gifts to the foundation are an investment in the students and university. Support was distributed in the following areas:

• Metro Fund	\$122,944
• Programs	\$320,951
• Scholarships	\$787,353
<hr/>	
Total	\$1,231,248

The foundation provided support for 120 emergency awards to students through the SAFE Fund and the Random Acts of Kindness Fund.

The foundation supported students through scholarships by funding and managing the scholarship award process and awarding 423 scholarships.



Kourtney Eichten—Reginald and Francis Coakley Ames Scholarship Recipient

Metro State Foundation By the Numbers

Metro State University Foundation

Statement of Financial Position (June 30, 2023) //////////////////////////////////////

ASSETS		LIABILITIES AND NET ASSETS	
CURRENT ASSETS		LIABILITIES	
Cash and cash equivalents	76,734	Accounts payable	108,304
Investments	1,951,561	Scholarships payable	6,500
Contributions receivable, net of allowance	269,200	Unearned revenue	13,500
Prepaid expenses	58,826	Total liabilities	128,304
Total current assets	2,356,321		
OTHER ASSETS		NET ASSETS	
Contributions receivable, net of current portion	275,603	Net assets without donor restrictions	
Endowment contributions receivable	87,231	Board designated for alumni association	46,015
Investments held for endowment	8,565,641	Board designated for endowment	502,762
Total other assets	8,928,475	Undesignated	691,784
TOTAL ASSETS	11,284,796	Total net assets without donor restrictions	1,240,561
		Net assets with donor restrictions	
		Perpetual in nature	6,190,299
		Purpose restrictions	3,725,632
		Total net assets with donor restrictions	9,915,931
		Total net assets	11,156,492
		TOTAL LIABILITIES AND NET ASSETS	11,284,796



“ I am a senior at Metro State. I am majoring in both accounting and business administration. The value of education means a lot. It’s something that you’ll always have. It takes work, it’s challenging, but it’s also rewarding. I’ve put a lot of work into my degrees, and I’m very excited to take that along with me because it’s only the beginning. ”

—Arianna Villanueva-Montoya, Kopp Family Foundation Scholarship Recipient

Our Commitment

The Metro State University Foundation exists to support Metro State University's mission by raising private voluntary support from alumni, parents, friends, corporations, foundations, and others. In addition to providing ongoing support, the foundation is dedicated to helping the university build an endowment that supports the long-term priorities of the university to nurturing relationships with future and current donors to the university. The foundation is governed by a volunteer board of directors who share their time and talents for the good of the foundation and Metro State University.

2022-2023 Metro State University Foundation Board of Trustees

Harpreet Anand
VP, Corporate Tax
Travelers

Jeanette Augustson
Executive Director of Operations
HealthPartners Institute

Zeeshan Baig '05, Treasurer
Finance Manager
Entegris, Inc.

Christine Boese, Chair
VP of Patient Care Services/
Chief Nursing Officer
Regions Hospital

Wendy Brekken
Chief Wealth Planning Officer
Private Wealth Asset Management

Robert Carter
Founder
Summit Mortgage Corporation

Joseph Ellis '19 (Honorary), Vice-Chair
CEO
SPAC Development Group

Tony Gagliardo
VP Enterprise, Nuclear and Technical
Xcel Energy Inc.

Ezell Jones
Founder and Managing Partner
Fifth Quarter Integrated Solutions

Suhanthi Kamesh '01
SVP, Business Risk and Control Director
Wells Fargo

Ochen Kaylan '08, Secretary
Senior Consultant
OKI

Gregory Lais
Founder
Wilderness Inquiry

Jay Laughlin
VP Engineering and Technical Services
Xcel Energy Inc.

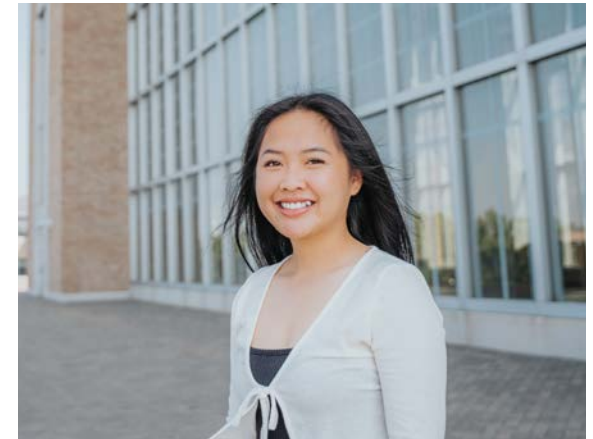
Michael O'Connor '92
Senior Research Program Director
Medtronic

Colin Partridge '00
Senior HR Professional, retired
Carlson Travel

Beth Russell
Adjunct Faculty, retired
University of Saint Thomas

Nancy Uden '88*
Retired
Great Clips, Inc.

**Alumni Board representative*



“ I’m the youngest in my family, and I’m the first one to go to college and will be graduating from college. This means a lot to me because the first motive that we [had when we] came to U.S. was for the education, to build a new life, to get a better life. My mom had a lot of hopes for us. So me having the opportunity to go to college and actually doing well and having their full support, it means a lot to me. I am really excited to graduate, and I want to do this for me, my mom and the community. ”

—Moo (Toelay) Sher, Harry Specht Endowed
Community Service Award

Investing in a Vibrant Future for Generations to Come

Because of the incredible generosity of the F. R. Bigelow Foundation, the Early Childhood Simulation Lab at Metro State's Midway teaching location is more than a child's dream preschool classroom; it's also an optimal learning resource designed for Early Childhood Studies (ECS) faculty and students, who further its profound impact through the thousands of children they will teach in the future.

The Simulation Lab provides opportunity for students and faculty to engage in experiential learning through role-play of teacher and child scenarios in the classroom; it provides a risk-free environment for students to practice arranging ideal learning centers and elements for social and emotional development; and student learnings are shared through photo displays of unique ways they have designed the space for various course assignments.

The lab is complete with furnishings, materials, and equipment that all meet licensing requirements; it is ready and inviting to children and their families because knowledgeable ECS students have set it up to be developmentally and culturally appropriate and appealing to children's ages, interests, and abilities. To complement the lab, there is an adjoining resource space with various curriculum sets, assessments, and other early childhood references for students to use in designing their classrooms and activities.

With the F. R. Bigelow grant awarded in 2021, instructors furnished the lab with fundamental items, such as tables, chairs, shelving, cubbies, cabinets, and cots; the subsequent grant awarded in 2022 outfitted the lab with the rest of the materials dictated by early childhood best practices and licensing requirements, such as our students will find in real-world settings.



Professor Carmen Cook and students in the Early Childhood Simulation Lab

The impact of these gifts cannot be understated. The Simulation Lab was put to immediate use by students and faculty and incorporated into course lesson plans. Every year, more than 100 students can benefit from applying knowledge and practicing skills in the Early Childhood Simulation Lab as they continue to grow in recommended competencies. A facilities schedule and calendar are also available for community reservations of the lab.

Long-term, students who learn in the Simulation Lab incorporate specialized knowledge and competencies in caring for and educating the thousands of young children they will teach and their families. These students provide the educational foundation children need to succeed in school and life.

None of this is possible without investment from the F. R. Bigelow Foundation—a partner committed to supporting the community we share. And this type of support has never been more essential.

Early childhood is a critical time in a child’s development that lays the foundation for brain architecture and social emotional development.

The quality of the care and education children receive during this time affects their future successes and challenges. However, Minnesota faces a talent-gap and high staff turnover in early childhood programs.

The success of Minnesota’s children depends on well-educated teachers representing the rich diversity of the Twin Cities. Most of Metro State’s ECS students live and work in Saint Paul, and a majority of students are from communities underrepresented in teaching.

Since its founding, the F. R. Bigelow Foundation has been committed to making the Saint Paul community a better place in which to live, learn, and grow. From 1946 through today, the foundation has invested deeply across the East Metro. Because of this legacy

of generosity, many generations of Metro State University Early Childhood Studies students and the families and children in the communities they serve will benefit in immeasurable ways.

We are grateful for this partnership and investment in the future and thank F. R. Bigelow for this transformational gift!

“Metro State University is uniquely positioned to help close the talent and skill gap among early childhood education professionals caring for and teaching low-income children of color. Many of our Early Childhood Studies students are women of color and/or immigrants working in culturally specific childcare centers. The lab enables our students to increase their knowledge and improve their workplace care center’s quality. And because most of our students work with diverse groups of children, the Simulation Lab helps them learn to create developmentally and culturally appropriate learning environments that also meet Minnesota Licensing regulations and other ratings that indicate high quality learning.”

—Carmen Cook, assistant professor, Psychology, Metro State University



Students planning developmentally appropriate lessons

Change the World, Your Way //

Community Faculty Member Amanda Richards Leaves a Legacy of Empowerment to the Students of Metro State



Amanda Richards

We are sad to announce that Amanda Richards passed on May 20, 2023, but not before she had the opportunity to define how she will be remembered and to know that others will remember her with love, respect, and gratitude.

Just months after Amanda was given a 5-year, all-clear bill of health, the cancer she was diagnosed with years earlier returned with a vengeance. The oncologist told her that this was one of the most aggressive cancers the doctor had ever seen. When Amanda reached out to friends and family to let them know, one of her friends offered to organize a living wake. Amanda was honored. More than 75 people from all over the globe participated via Zoom. Each person was given 3 minutes to share the impact Amanda had made on their lives.

It was during the wake that Amanda announced that she was leaving a bequest to establish a scholarship at Metro State as part of her legacy. **“I appreciate that I got my undergrad through scholarships. My family could not afford to send me to college, so I worked my butt off and got scholarships, and got a good education that really enabled me to do other things educationally.”**

Following her announcement, a dream grew to have Amanda see the first award granted. Amanda’s friend and former colleague Weston Edwards wanted to help establish the scholarship fund and get an award out as quickly as possible. He offered a \$25,000 matching donation. Amanda’s family, friends, and colleagues rallied. Within weeks of announcing the match, another \$25,000 was raised, and the first Amanda Richards Change the World scholarship was awarded in the fall of 2022.

Amanda’s husband, Steve, and daughters Lauren and Bethany reviewed the applications. Amanda and Weston were overjoyed to meet the first recipient, Zahra Omar, especially since Zahra was a former student of Amanda’s. **“So, when I found out that she was the first recipient, I was thrilled, because it is really nice to know that I’ve had an interaction with the student who was awarded the first scholarship, but also who is so well-positioned to go out there and effectively change the world.”**

Edwards was also impressed by the recipient.

“What stands out for me is what Amanda is all about in her scholarship: underserved populations, representation, both as students and professionals. The goal of the scholarship is to provide resources to those underserved populations both as future clinicians and as clinicians serving future populations, and in that sense, Zahra is just a perfect match.”

Zahra Omar was the first Somali student in Metro State’s graduate Co-occurring Disorders Recovery Counseling program. She graduated in May 2023 with her master’s degree. Her motivation is to help her native Somali community and that community’s stigma toward confronting issues of mental illness and substance abuse, which members of her family have experienced. **“I just needed to help people and figure out what in the Somali community creates this stigma and try to help remove it.”**

Zahra focused her master’s project on the recovery experiences of Somali Americans: (What has their recovery experience been like? How does their recovery help them participate in community, in family, in religion? What does recovery mean to them?) From the information she gathered, Zahra created a brochure to better inform clinicians how to work with the Somali community and distributed the pamphlets to treatment centers in the area. Today,



Steve Richards, Zahra Omar, and Amanda Richards

Zahra works with Somali and other clients as a licensed alcohol and drug counselor at Progress Valley, a local nonprofit treatment center. She is studying to take the National Clinical Mental Health Counseling Exam to become a licensed professional clinical counselor (LPCC) or mental health therapist.

Zahra believes that Amanda’s legacy is not just the scholarship, but also the impact she continues to have on the students she taught. She lives on through the

knowledge, experience, and wisdom she shared with her students.

The gift Amanda left to Metro State in her bequest will be added to the scholarship fund, along with donations made in her memory and ongoing contributions. Amanda’s goal was to create an endowed fund that ultimately would provide full scholarships every year into perpetuity—keeping Amanda’s legacy alive.

Family's Scholarship Supports Nearly 60 Nursing Students

In 2005, 18 years ago, a local couple who had grown up on a farm made a gift to provide scholarships to Metro State University nursing students. The couple valued nursing as a vital helping profession and recognized the hard course of study through the experiences of multiple family members who were nurses—a daughter, niece, and several cousins.

They were concerned about the future of health care and the nursing shortage and wanted to support aspiring nurses. After touring Metro State's nursing education program and meeting the students, they established an endowment to award up to four scholarships annually. They particularly wanted to help those in need. Since 2009, 58 Metro State nursing students have benefited from their generosity and forward thinking.

We recently had a chance to visit with the family—the mother and the donors' daughter, an advanced practice nurse—to learn more about their commitment to Metro State spanning nearly two decades. Sadly, the husband has since passed, but he wanted a legacy of generosity and faith shared with Metro State. While the family prefers to remain anonymous, they are happy to share why they invest in Metro State students.

The couple had a GED and high school diploma between them; neither had the opportunity to go to college. They both recognized that life would have been easier if they had that education. As a result, they wanted to provide a leg up to someone else who may face challenges to pursuing a degree, such as lack of financial means, recent immigration or being the first in one's family to go to college.

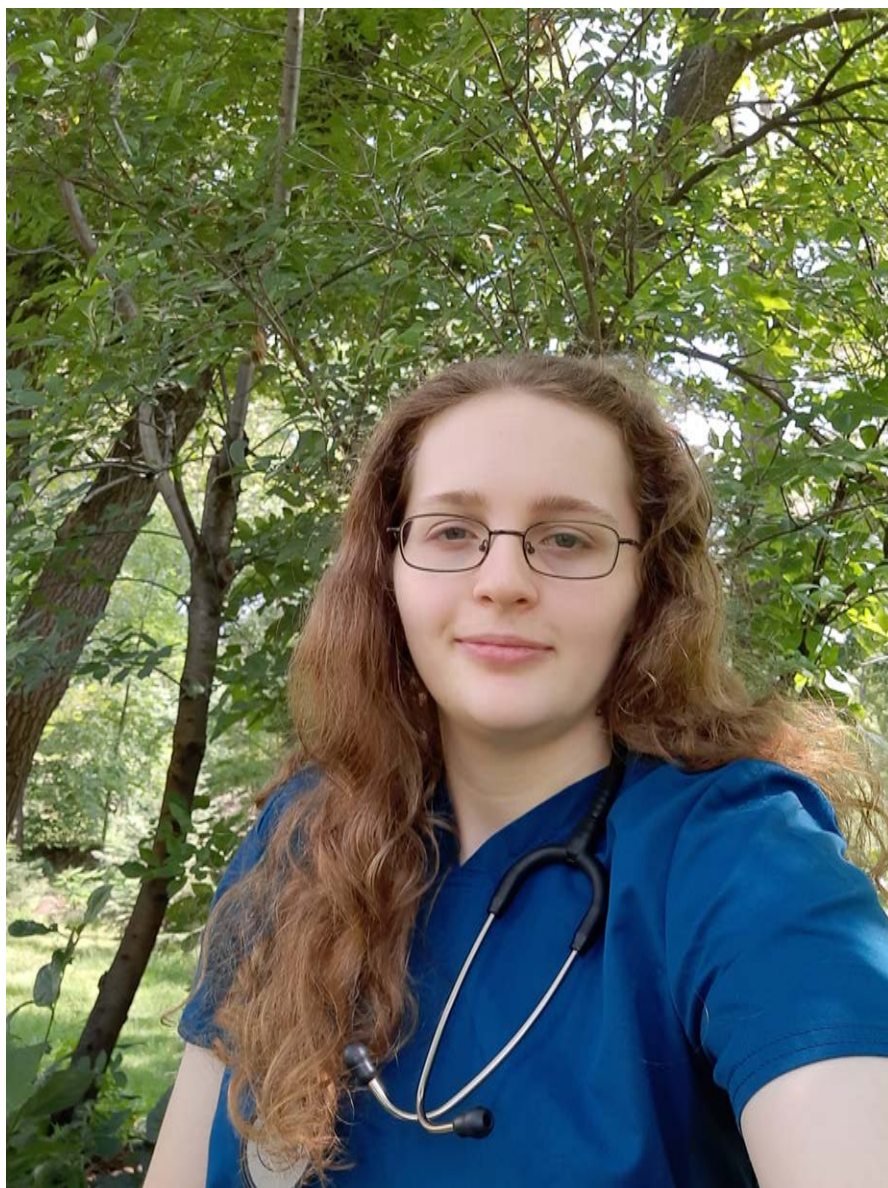
They chose to partner with Metro State because of its affordability and because the university's mission aligned with their goals:

The university will provide accessible, high-quality liberal arts, professional, and graduate education to the citizens and communities of the metropolitan area, with continued emphasis on underserved groups, including adults and communities of color.

They believed that the university reached out to students who would not be where they are today without the education received at Metro State.

They saw over the years Metro State grow and appreciated the careful planning. The school used investments wisely. For the couple, it was a joy to watch. Without the legacy funding that other local universities enjoy, they considered Metro State kind of an underdog and were delighted to see it succeed.

Throughout the years, the donors have had the opportunity to meet their scholarship recipients, hear about their high goals, and applaud their achievements. They also have received many letters of gratitude from the scholars, which the mother kept and showed to her family. She highlighted a couple of them. One was from a student who planned to go on to medical school. Another was from a single mother. Through these touchpoints, the donors could see how their gifts benefited the students firsthand. The donors credited Deb Vos, a longtime leader with the Metro State Foundation who retired in 2020, and President Ginny Arthur for fostering these relationships.



Michelle Workman

In June of this year, the family met one of their most recent scholars, Michelle Workman.

Michelle will be graduating this December with her Bachelor of Science in nursing. Her goal is to go into postpartum nursing. She is grateful for the multiple clinical experiences offered as part of the program. The exposure to different settings helped her to identify her passion.

Michelle graduated from high school in 2019 and enrolled in the nursing program at Inver Hills Community College. In high school, Michelle was interested in nature and biology. Her high school offered an Emergency Medical Technician (EMT) program, which piqued her interest. Michelle learned that she enjoyed the medical training offered by the program and decided to pursue nursing. She earned her Registered Nurse certification after a little more than two years at Inver Hills and transferred to Metro State to complete her bachelor's degree.

Michelle works at an assisted living facility while she pursues her studies. The support she receives from the scholarship and her parents allows her to work part-time versus full-time while she is in the nursing program, and she is grateful! She sees other classmates struggling to balance their shifts, classes, and homework, and she understands how difficult that is.

Michelle was happy to have the chance to meet the scholarship donors. She enjoyed hearing the stories about opportunities in nursing as the donors' daughter shared about her nursing career. Michelle valued her advice, especially to keep learning and stay open to new possibilities.

Making a Gift

There are many ways to make a gift to the Metro State University Foundation. Choose what works best for you.

Online: Make a gift online with your credit card at metrostate.edu/give or metrostate.edu/give/give-now. You can make a one-time contribution or set up a monthly gift.

Check or EFT: Send a check for a one-time gift or a voided check to set up a monthly gift via electronic funds transfer (EFT).

Donor-Advised Funds: Make a gift through a grant from your donor-advised fund.

Tribute Gifts: Pay tribute to a loved one with an honorary or memorial gift in their name online or via check.

Corporate Matching Gifts: Check with your employer to see if they offer a matching gift program to double the impact of your contribution!

Stock: Your gift of appreciated stock could be a tax-wise way to support Metro State University. Visit metrostate.edu/give/ways-to-give for more information.

Qualified Charitable Distribution from your IRA: If you are 70½ or older, you can make a rollover gift up to \$100,000 directly from your IRA to Metro State University Foundation—known as a qualified charitable distribution (QCD). You may use your QCD from your IRA to satisfy all or part of your required minimum distribution (RMD), which could provide tax savings. To be considered a QCD, the check must come directly from your financial institution to Metro State University Foundation, Founders Hall 142, 700 East Seventh Street, Saint Paul, MN 55106.

Legacy Giving: You can make sure your family is taken care of while also making the best gift of your lifetime to Metro State University Foundation. To learn more about leaving a legacy, visit metrostate.giftlegacy.com.



FOUNDATION

700 East Seventh Street Saint Paul, Minnesota 55106-5000
Phone: 651.793.1801
foundation@metrostate.edu



Metropolitan State University,
A member of Minnesota State

Metropolitan State University is a comprehensive, urban, public university. The university is regionally accredited by the Higher Learning Commission. This information is available in alternative formats upon request by contacting the Center for Accessibility Resources, accessibility.resources@metrostate.edu or 651.793.1549. An equal opportunity educator and employer. We are proud to be a military-friendly university, nationally recognized for providing a high standard of programming and assistance to those who have served in the United States Armed Forces. 11/2023